



**METALTECH**

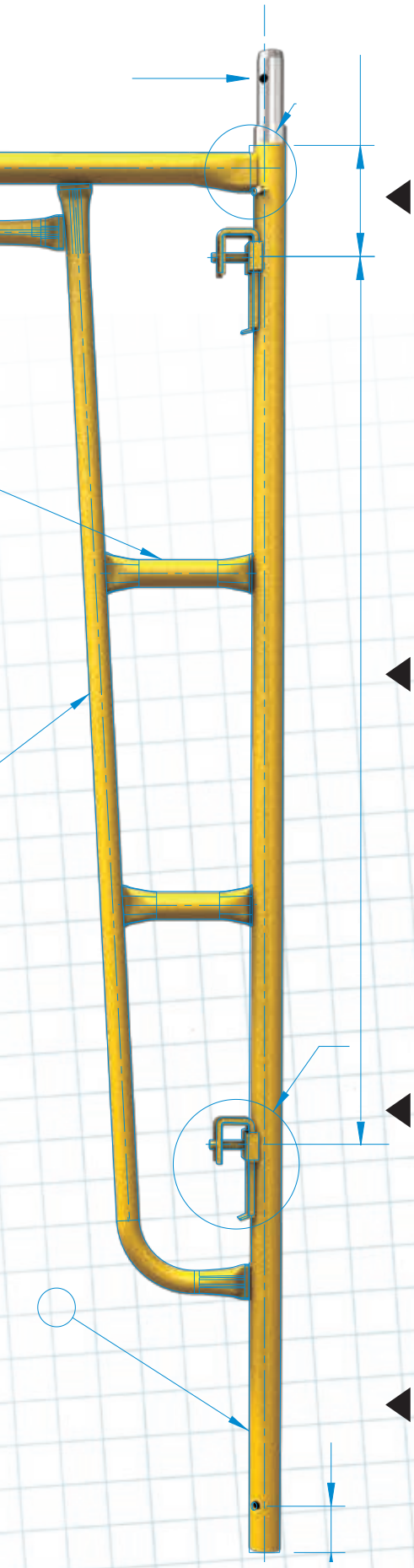
**EXTERIOR  
SCAFFOLDING**

**SAFERSTACK**  
A METALTECH INNOVATION

**BUILT TOUGH FOR  
SAFETY**

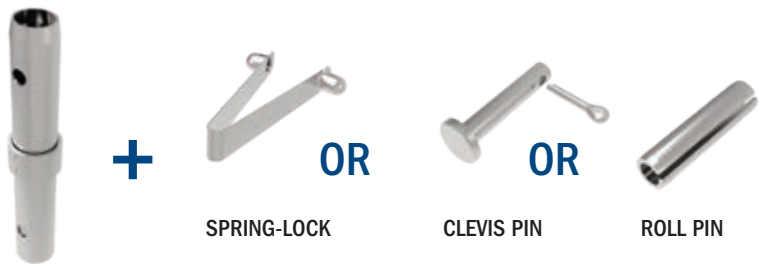
**PROUDLY MADE IN  
NORTH AMERICA**

# MANUFACTURING OPTIONS



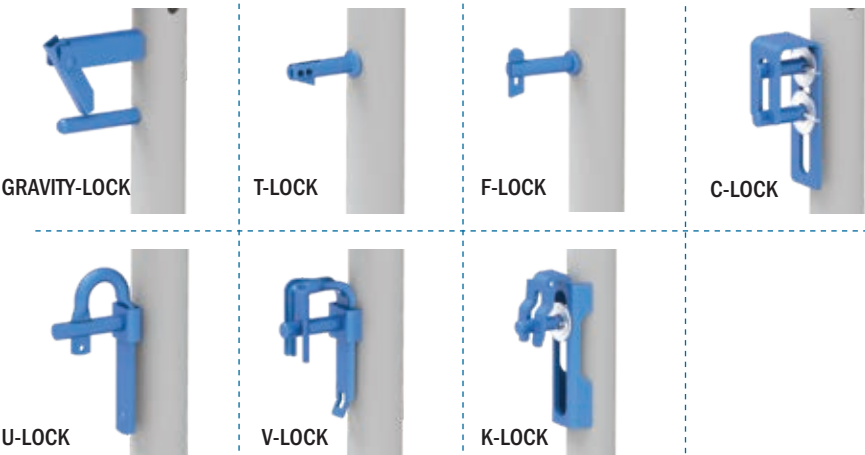
## COUPLING PINS

CONNECT & SECURE YOUR COUPLING PIN TO ANY SCAFFOLD FRAME LEGS WITH OUR CHOICE OF SPRING-LOCK, CLEVIS OR ROLL PINS. ASK OUR CUSTOMER SERVICE FOR MORE DETAILS.



## FRAME LOCKS\*

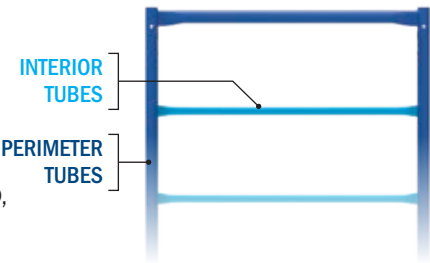
METALTECH OFFERS A WIDE RANGE OF FRAME LOCKS TO MEET YOUR NEEDS. ORDER YOUR CHOICE THROUGH OUR CUSTOMER SERVICE FOR EITHER ONE OF OUR GRAVITY-LOCK, T-LOCK, F-LOCK, C-LOCK, U-LOCK, V-LOCK OR K-LOCK LOCKING SYSTEMS.



## CUSTOM FRAMES\*

WITH MANY YEARS OF EXPERIENCE, SUPPORTED BY OUR MANUFACTURING FACILITY AND ENGINEERING TEAM, WE CAN MATCH YOUR NEEDS BY DEVELOPING CUSTOM FRAMES.

OUR FRAMES AND TUBES CAN BE MADE COMPATIBLE WITH BRANDS SUCH AS VANGUARD, BIL-JAX AND SAFWAY. CONTACT OUR CUSTOMER SERVICE FOR MORE INFORMATION. \*\*



## SPECIAL COLORS & HOT-DIP GALVANIZATION

MOST SCAFFOLDING FRAMES WE MANUFACTURE ARE ALSO AVAILABLE WITH A HOT-DIP GALVANIZED FINISH, IN ORDER TO INCREASE THE LIFE SPAN. WE ALSO OFFER THE OPTION TO CHOOSE POWDER COATED FINISH COLORS\* AND TEXTURES. PLEASE INQUIRE WITH CUSTOMER SERVICE FOR OUR COMPETITIVE RATES!



\*MINIMUM ORDER QUANTITY APPLIES  
\*\* ALL TRADEMARKS AND REGISTERED TRADEMARKS LISTED ABOVE ARE THE PROPERTY OF THEIR RESPECTIVE OWNERS.

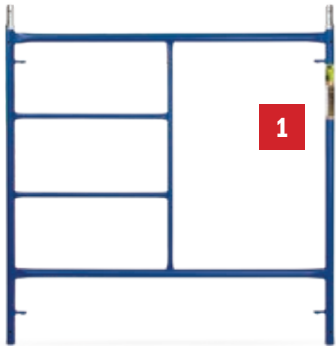


# FRAME SYSTEMS

WEATHER RESISTANT ANTI-SLIP POWDER-COATED FINISH OFFERS LASTING DURABILITY TO WITHSTAND TOUGH JOBSITE CONDITIONS

## STANDARD

IDEAL FOR ANY COMMERCIAL OR RESIDENTIAL CONSTRUCTION PROJECT

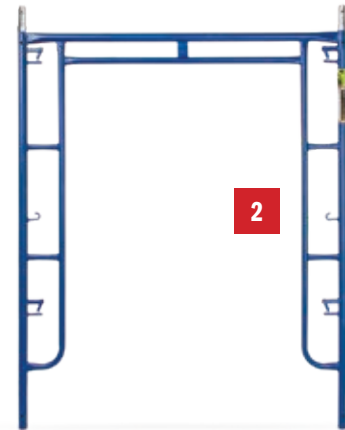


### AVAILABLE DIMENSIONS:

36" X 60"	48" X 60"	60" X 60"
72" X 60"	76" X 60"	76" X 24"
60" X 48"	60" X 30"	60" X 24"
60" X 36"/60" (ADJUSTABLE FRAME)		

## WALK-THRU ARCH

FOR HIGH PEDESTRIAN TRAFFIC AREAS, OFFERING WALK-THROUGH CONVENIENCE

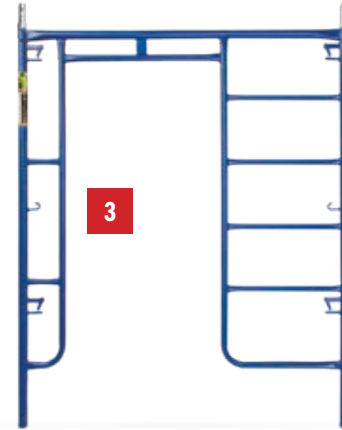


### AVAILABLE DIMENSIONS:

76" X 60"	78" X 60"
76" X 42"	76" X 36"
120" X 78"	121" X 60"

## LADDER ARCH

INCLUDES LADDERS FOR EASY CLIMBING AND MATERIAL PLACEMENT

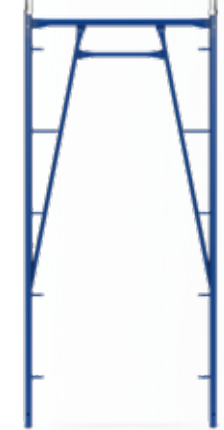


### AVAILABLE DIMENSIONS:

76" X 60"	78" X 60"
-----------	-----------

## PLASTER

NARROW FRAME FOR LIGHTER PROJECTS AND EASE OF MOVEMENT ALONG WORK AREA

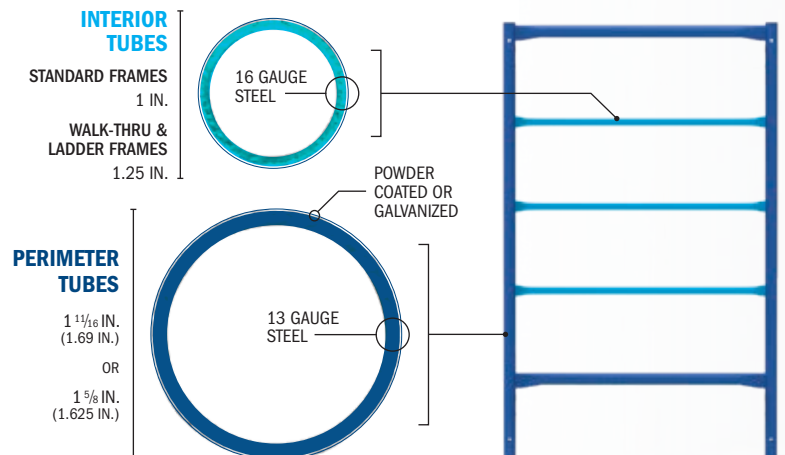


### AVAILABLE DIMENSIONS:

80" X 36"
-----------

## GENERAL SPECIFICATIONS

INTERIOR TUBES	STANDARD FRAMES: OUTSIDE DIAMETER 1 IN. - 16 GAUGE
	WALK-THRU & LADDER FRAMES OUTSIDE DIAMETER 1.25 IN. - 16 GAUGE
PERIMETER TUBES	OUTSIDE DIAMETER 1.69 IN. - 13 GAUGE (MODEL MF6060PS-A: 1.625 IN. - 13 GAUGE)
FINISH	POWDER COATED OR GALVANIZED
STANDARDS	ANSI, OSHA AND CSA



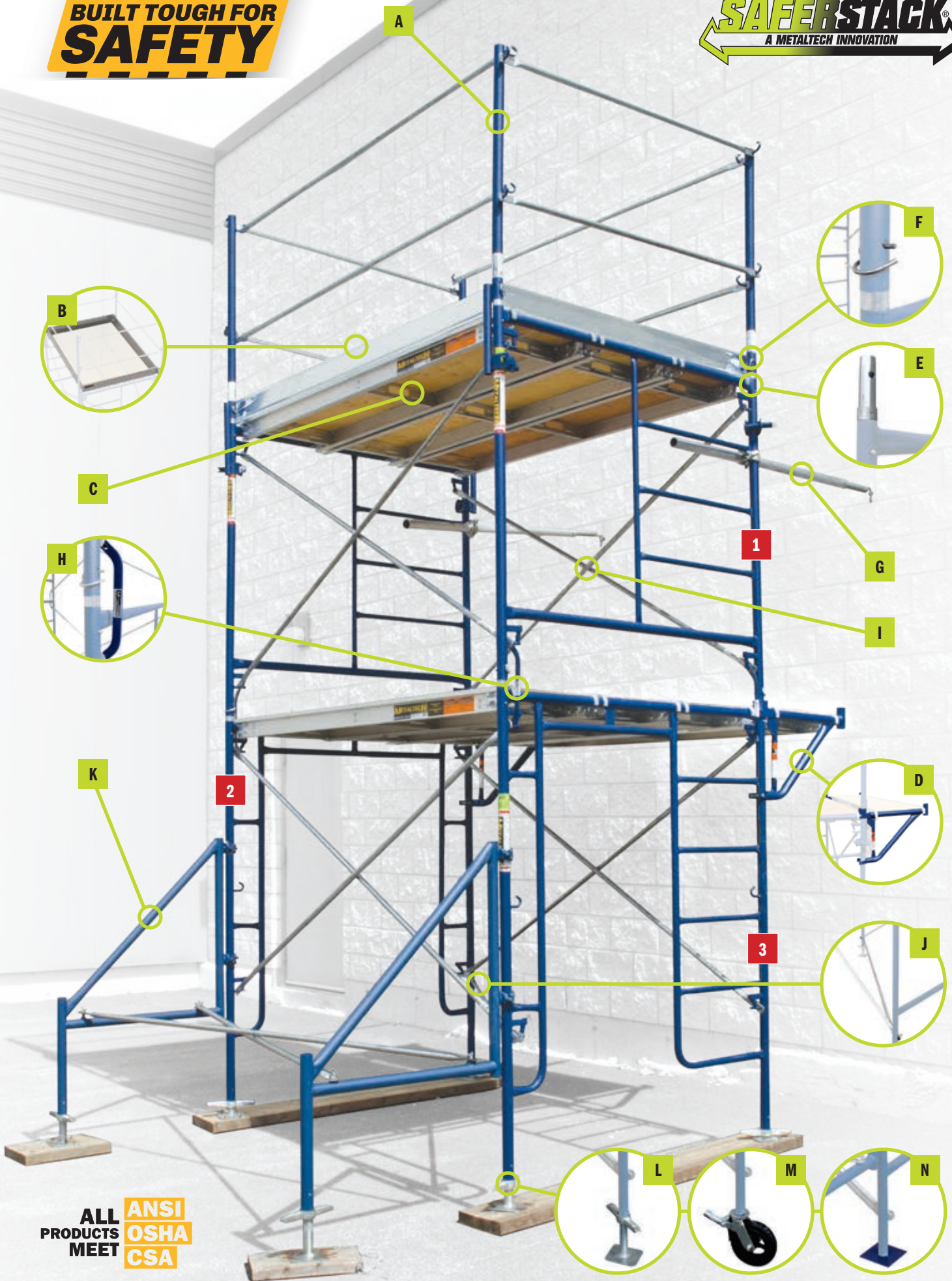
# SAFERSTACK®

## STACKS IN 30% LESS SPACE THAN REGULAR FRAMES

- SAFERSTACK® HELPS PREVENT STACKED FRAMES FROM SLIDING
- 100% COMPATIBLE WITH ANY STANDARD METALTECH® FRAME
- TESTED TO MEET ANSI, CSA AND OSHA STANDARDS

**BUILT TOUGH FOR  
SAFETY**

**SAFERSTACK®**  
A METALTECH INNOVATION



**ALL  
PRODUCTS  
MEET**

**ANSI  
OSHA  
CSA**



# MAIN COMPONENTS

## GUARDRAIL & TOEBOARD



**A** GUARDRAIL POST AND GUARDRAIL



**B** GALVANIZED TOEBOARD

## PLATFORM & SIDE BRACKET



**C** ALUMINUM PLATFORM WITH 5/8" PLYWOOD DECK



**D** SIDE BRACKET

## COUPLING & BRACE



**E** COUPLING PIN



**F** PIG TAIL



**H** LOCK ARM



**I** GALVANIZED CROSS BRACE



**J** GALVANIZED DIAGONAL BRACE



**G** WALL ATTACHMENT

## BASE & OUTRIGGER



**K** OUTRIGGER



**L** GALVANIZED LEVELING JACK



**M** 8 IN. CASTER



**N** 6 X 6 IN. BASE PLATE

## COMPLEMENTARY COMPONENTS

WE OFFERS A VARIETY OF COMPLEMENTARY COMPONENTS LIKE STAIRWAYS, PULLEY & HOIST, BRACKETS, WAGONS, ETC. CONTACT OUR CUSTOMER SERVICE FOR MORE INFORMATION OR VISIT OUR WEBSITE.



ADJUSTABLE END-STOP GUARDRAIL



WAGON



SCAFFOLDING RACK



LEVELING JACK WITH U-HEAD



HEAVY DUTY 8 IN. CASTER



DEBRIS NETTING



SCAFFOLD TARP



ACCESS LADDERS



HOIST POST & PULLEY



**STEEL STAIR & HANDRAILS**  
• POWDER COATED FINISH  
• COMPATIBLE WITH: STEP UP, BILJAX, SCAFFOLD TODAY, VANGUARD AND METALTECH\*

\* All trademarks and registered trademarks listed above are the property of their respective owners.

# PLATFORMS

## ALUMINUM PLATFORM WITH 5/8" PLYWOOD DECK



DIMENSIONS	LOAD CAPACITY
7 FT X 19 IN.	100 LB/FT <sup>2</sup>
7 FT X 24 IN.	75 LB/FT <sup>2</sup>
7 FT X 28 IN.	
8 FT X 19 IN.	
10 FT X 19 IN.	50 LB/FT <sup>2</sup>
10 FT X 24 IN.	
10 FT X 28 IN.	

## ALUMINUM PLATFORM WITH 5/8" ANTI-SLIP PLYWOOD DECK AND EDGE CAPPING



DIMENSIONS	LOAD CAPACITY
7 FT X 19 IN.	100 LB/FT <sup>2</sup>
10 FT X 19 IN.	75 LB/FT <sup>2</sup>
WITHOUT EDGE CAPPING	
7 FT X 24 IN.	75 LB/FT <sup>2</sup>
10 FT X 24 IN.	50 LB/FT <sup>2</sup>

## ALUMINUM PLATFORM WITH EDGE CAPPING



DIMENSIONS	LOAD CAPACITY
7 FT X 19 IN.	100 LB/FT <sup>2</sup>
10 FT X 19 IN.	75 LB/FT <sup>2</sup>

## PLATFORM WITH TRAPDOOR AND LADDER



DIMENSIONS	LOAD CAPACITY
7 FT X 28 IN.	75 LB/FT <sup>2</sup>
10 FT X 28 IN.	50 LB/FT <sup>2</sup>

## ALL ALUMINUM PLATFORM



DIMENSIONS	LOAD CAPACITY
7 FT X 19 IN.	75 LB/FT <sup>2</sup>
8 FT X 19 IN.	
10 FT X 19 IN.	

## INNOVATIVE FEATURES

### ✓ CROSSBEAM\*



- EVENLY SUPPORTS THE 5/8" THICK PLYWOOD AND PREVENTS IT FROM FLEXING
- GALVANIZED STEEL
- ERGONOMIC HANDLE CUT OUT FOR COMFORT AND EASY HANDLING

### ✓ EDGE CAPPING\*\*



- PREVENTS EXTREMITY WEAR
- RE-INFORCES PLYWOOD DECK EXTREMITIES
- INCREASES THE PLYWOOD LIFESPAN
- CUSTOMIZES YOUR EDGE CAPPING WITH YOUR COMPANY NAME. (MINIMUM ORDER QUANTITY APPLIES)

### ✓ SIDE RAILS



- PROTECT THE PLYWOOD EDGES TO PREVENT WATER INFILTRATION, DELAMINATION AND PREMATURE WEAR

\* STANDARD ON PLYWOOD PLATFORMS MODELS OF 19 IN. WIDE.

\*\* ONLY AVAILABLE ON PLYWOOD PLATFORMS MODELS OF 19 IN. WIDE



### CUSTOMER SERVICE

T : **1 800 363-7587** (TOLL FREE NUMBER)

F : **1 866 517-7585**

@ : **CS@METALTECH.CO**

**WWW.METALTECH.CO**

